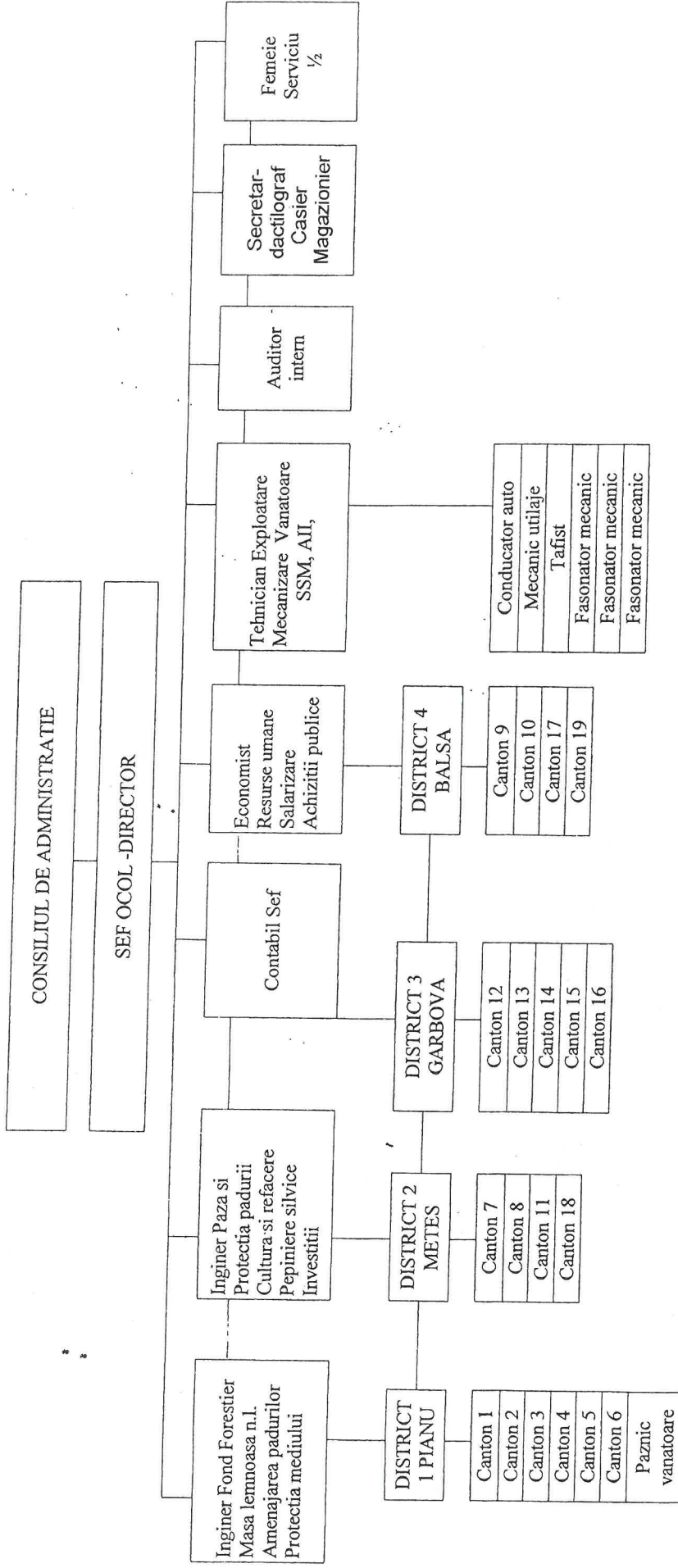


Organigrama Regiei Autonome Locale Ocolul Sivic Valea Pianului R.A.
2018



TESA

Sef ocol	1 post	Sef district	4 posturi
Inginer silvic	2 posturi	Padurar	19 posturi
Contabil sef	1 post	Paznic vanatoare	1 post
Economist	1 post		
Auditor intern	1 post		
Tehnician silvic	1 post		
Secretar	1 post		
Femeie de serviciu	1 post		

DIRECT PRODUCTIVI

Conducator auto	1 post
Mecanic utilaje	1 post
Tafist	1 post
Fasonator mecanic	3 posturi



REGIA AUTONOMA LOCALA VALEA PIANULUI R.A.
Sef Ocol / Director
19.04.2018
Ing. Ghibu Nicolae Petru

SECRETAR COMUNA,
Y.N. CATARGIU CRISTINA

Consiliu de Administratie

Contabil
Ec. Ghibu Ana