

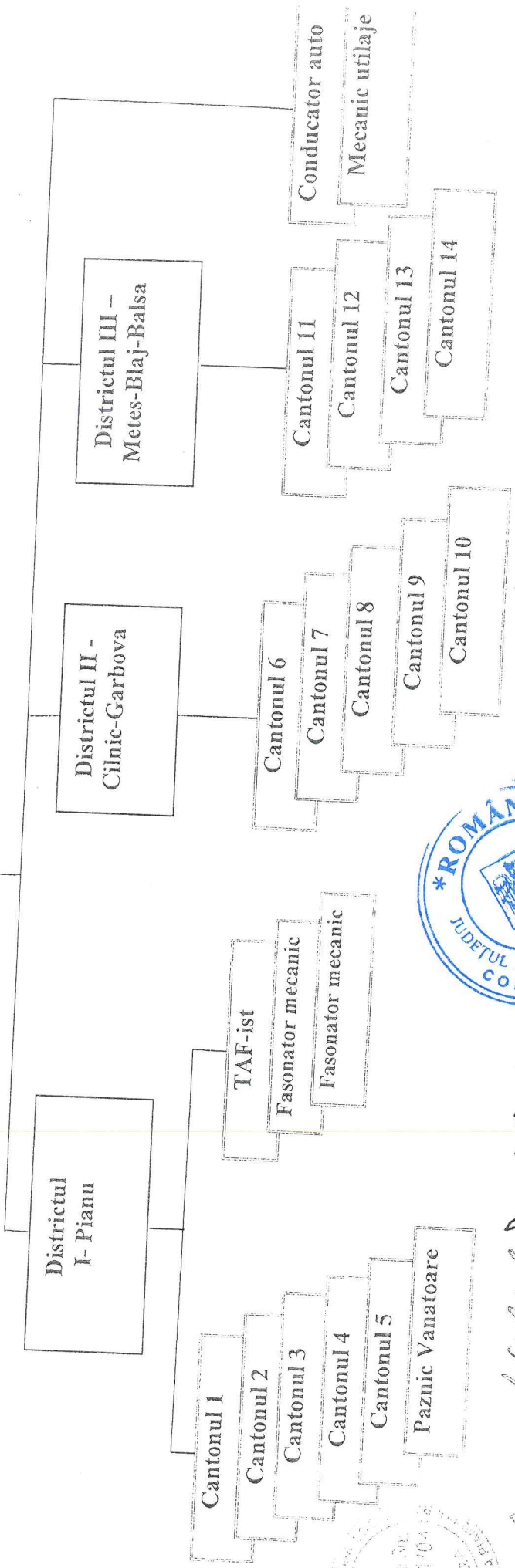
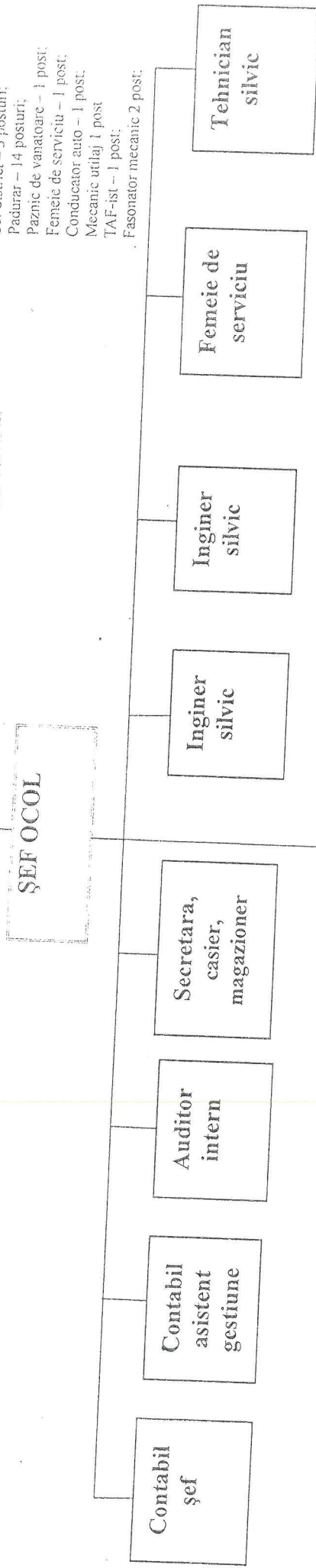
Ar. rev. la HCL nr. 20/22.02.2013

ANEXA 8

Organigrama Ocolului Silvic Valea P.aului R.A.-2019

CONSILIUL LOCAL AL COMUNEI PIANU CONSILIUL DE ADMINISTRATIE

- Recapitulatie:
- Şef ocol – 1 post;
 - Contabil şef – 1 post;
 - Contabil asistent – 1 post;
 - Secretar, casier magaz. – 1 post;
 - Auditor intern – 1 post;
 - inginer silvic – 2 post;
 - Tehnician silvic – 1 post;
 - Sef distriet – 3 posturi;
 - Padurar – 14 posturi;
 - Paznic de vanatoare – 1 post;
 - Femeie de serviciu – 1 post;
 - Conducator auto – 1 post;
 - Mecanic utilaj 1 post;
 - TAF-ist – 1 post;
 - Fasonator mecanic 2 post;



sef ocol
contabil, sef
Prezidinta Societate
Furdus Ana
Secretar
Rostogiu
CC-AN
full
all